

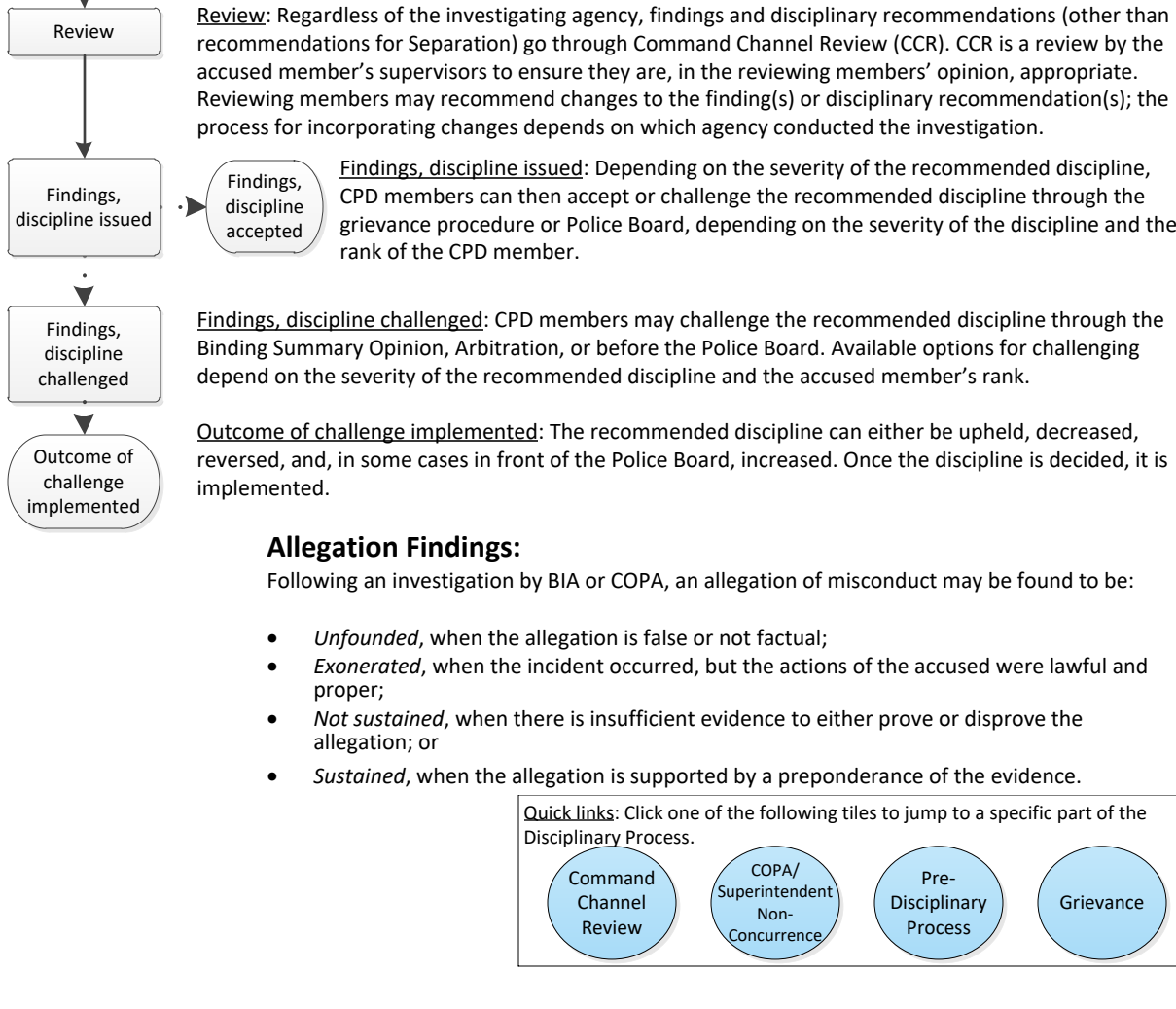
Disciplinary Process: Civilian Members, Suspension

(last updated: January 2022)

Chart Figures and Symbols:

- Start of processes** - This shape and color denotes the initiation of the discipline process.
- End of processes** - This shape and color denotes the culmination of the discipline process along the different paths a complaint register (CR) file may take.
- Process steps** - This shape denotes steps in the process being detailed.
- Sub-process steps within a given process** - This shape denotes subprocess steps within a given process.
- Decisions affecting pathway** - This shape denotes points at which a decision is made during the disciplinary process, which determines the process pathway.
- Documents** - This shape denotes specific documents used throughout the disciplinary process.
- Solid line with arrow** - indicates the next step in a given process.
- Solid line with arrow and text** - indicates the next step in a given process, with additional information and any restrictions or conditions, where applicable.
- Tiles outlined in red highlight points** - at which the level of discipline may change during the disciplinary process.

Overview of Disciplinary Process:



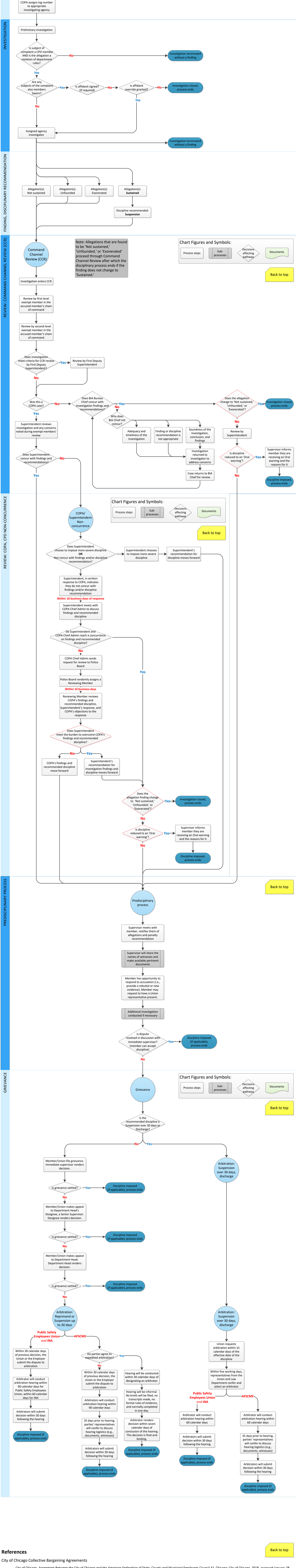
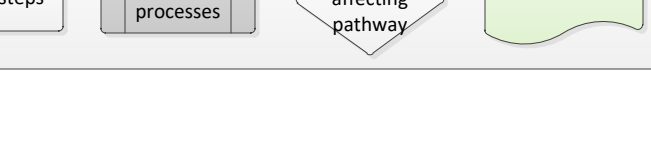
Acronyms & Terms:

- AFSCME – American Federation of State, County and Municipal Employees
- BIA – Bureau of Internal Affairs
- CHIEF ADMIN – Leads COPA
- CHIEF OF BIA – Leads BIA
- COPA – Civilian Office of Police Accountability
- CPD – Chicago Police Department
- FOP – Fraternal Order of Police (Police Officer union)
- INA – Illinois Nurses Association
- MCC – Municipal Code of Chicago
- OIG – City of Chicago, Office of Inspector General
- PB – Police Board
- BPBA (Unit 156) – Policemen's Benevolent & Protective Association of Illinois (Police Supervisor union)
- SUPERINTENDENT – Leads CPD

Allegation Findings:

- Following an investigation by BIA or COPA, an allegation of misconduct may be found to be:
- Unfounded**, when the allegation is false or not factual;
 - Exonerated**, when the incident occurred, but the actions of the accused were lawful and proper;
 - Not sustained**, when there is insufficient evidence to either prove or disprove the allegation; or
 - Sustained**, when the allegation is supported by a preponderance of the evidence.

Quick links: Click one of the following tiles to jump to a specific part of the Disciplinary Process.



References

- City of Chicago, Chicago Collective Bargaining Agreements
- City of Chicago, *Agreement Between the City of Chicago and the American Federation of State, County and Municipal Employees Council 31*. Chicago: City of Chicago, 2018, accessed January 28, 2022. https://www.chicago.gov/content/dam/city/depts/dol/Collective%20Bargaining%20Agreement3/AFSCME_CBA2017_22.pdf.
- City of Chicago, *City of Chicago Agreement with the Illinois Nurses Association*. Chicago: City of Chicago, 2019, accessed January 28, 2022. https://www.chicago.gov/content/dam/city/depts/dol/Collective%20Bargaining%20Agreement3/UNIT%20I%20IN%20CBA%202011_2018-6-30_2022%20Final%20and%20JULY%20Executed.pdf.
- City of Chicago, *City of Chicago Agreement with Public Safety Employees Union Unit II*. Chicago: City of Chicago, 2012, accessed January 28, 2022. https://www.chicago.gov/content/dam/city/depts/dol/Collective%20Bargaining%20Agreement3/UNIT%20II%20CBA%202011_2018-6-30_2022%20Final%20and%20JULY%20Executed.pdf.
- City of Chicago, Department of Human Resources
 - City of Chicago, *City of Chicago Personnel Rules*. Chicago: City of Chicago, 2014. Accessed January 28, 2022. https://www.chicago.gov/content/dam/city/depts/dhr/supp_info/hrpolicies/2014_PERSONNEL_RULES_FINAL_2014_v3.pdf.
- Chicago Police Department Directives System
 - City of Chicago, Chicago Police Department, "General Order G08-01: Complaint and Disciplinary System." December 2021, accessed January 28, 2022. <http://directives.chicagopolice.org/directive/public/6362>.
 - City of Chicago, Chicago Police Department, "General Order G08-01-02: Complaint Initiation and Log Number Investigation Assignment." December 2021, accessed January 28, 2022. <http://directives.chicagopolice.org/directive/public/6776>.
 - City of Chicago, Chicago Police Department, "Resources: Rules and Regulations of the Chicago Police Department." April 2015, accessed January 28, 2022. <http://directives.chicagopolice.org/directive/public/6412>.
 - City of Chicago, Chicago Police Department, "Special Order 508-01-01: Conduct of Complaint Investigations." November 2017, accessed January 28, 2022. <http://directives.chicagopolice.org/directive/public/6775>.
 - City of Chicago, Chicago Police Department, "Special Order 508-01-03: Command Channel Review." March 2020, accessed January 28, 2022. <http://directives.chicagopolice.org/directive/public/6856>.
- Civilian Office of Police Accountability
 - Civilian Office of Police Accountability, "Rules and Regulations." April 2018, accessed January 28, 2022. <http://www.chicagocopa.org/wp-content/uploads/2018/04/Final-COPA-Rules-and-Regulations-April-2018.pdf>.